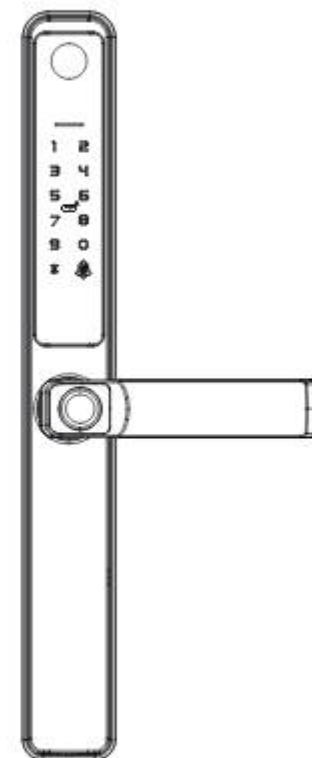




Smart Lock

User manual



* To connect to the Internet, must purchase the version with Tuya WiFi function

Scan the QR code below to download the APP



Search on the mobile app market or the Apple Store "Tuya Smart" or "Smart Life"



8 Language voice, Free to switch



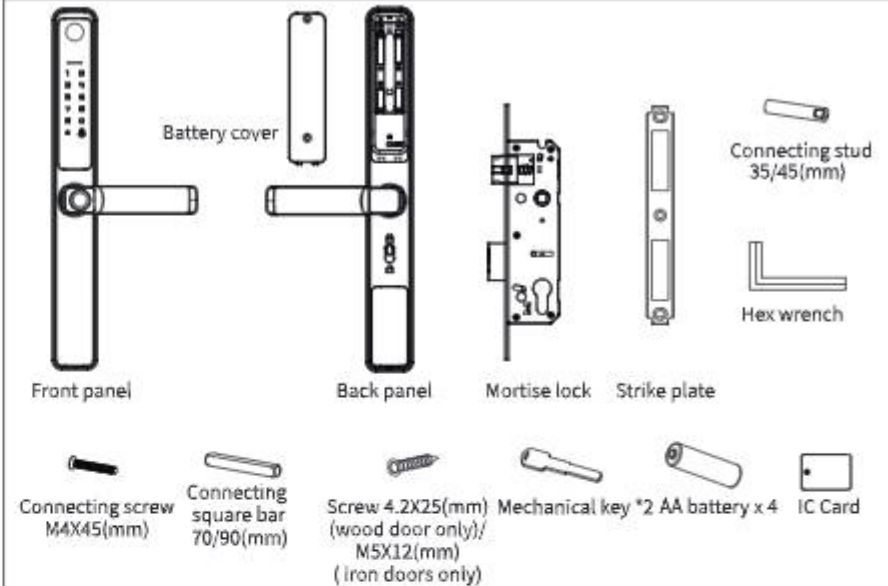
⚠ ATTENTION:

The lock comes with "English" voice as standard, and you can switch to other language by the following operations

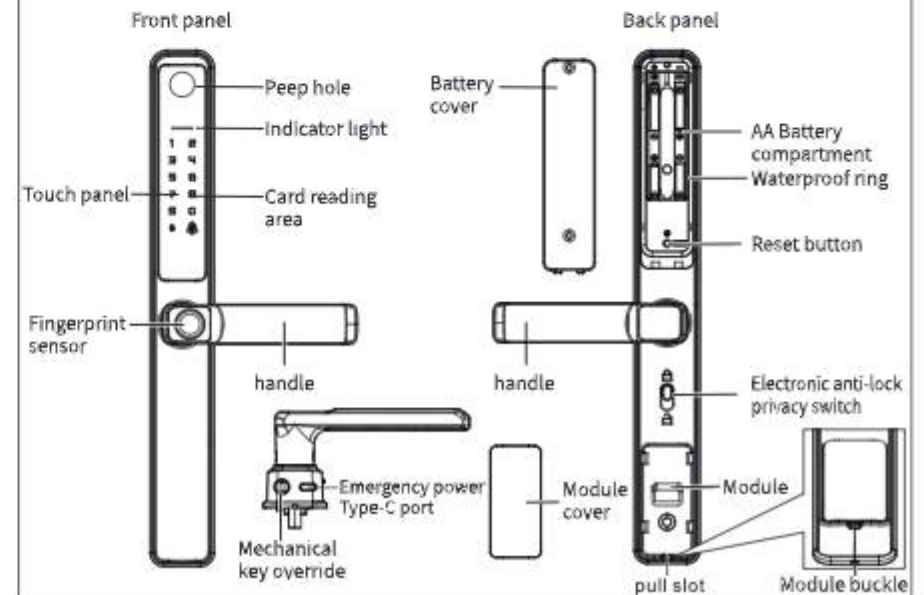
⚠ keep the lock under factory default without any users registered
Activate the keypad and input the code for other language of the voice

-  333666991# -English
-  333666992# -Arabic
-  333666993# -Russian
-  333666994# -Portuguese
-  333666995# -Thai
-  333666996# -Spanish
-  333666997# -Vietnamese
-  333666998# -Indonesian

Accessories



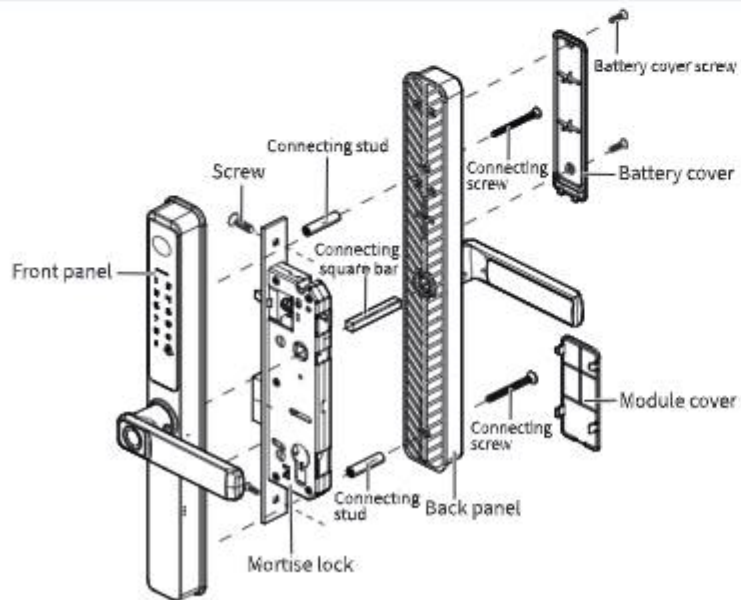
Product overview



Specification

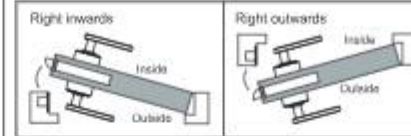
Material	Aluminum alloy, ABS, glass
Color	Black/silvery
Door thickness	35-70mm
Correspondence	WIFI
Support system	iOS 7.0 or above, Android 4.4 or above
Battery life	(10-12 months) Press 10 times/day to unlock normally
Power support	DC6V: 4 AA alkaline batteries
Static current	≤50 uA
Dynamic current	<200mA
Unlocking mode	Fingerprint, IC card, password, APP, mechanical key
Unlocking time	1-1.5 S
Working temperature	-20~50°C
Working humidity	10%-95%
Factory default password	Factory default password :123456. This password is invalid after you reset the administrator.
Lock type	2085/2585/2885/3585/4585/5085/6085/7085/3592/5572/6072
Virtual password	Available
Number of users	IC card + password + fingerprint : 300groups, 9 groups of administrators

Installation guide

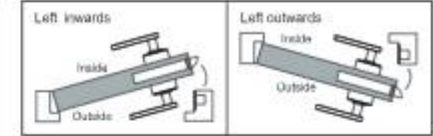


Door opening direction selection

1. Right handle opening



2. Left handle opening

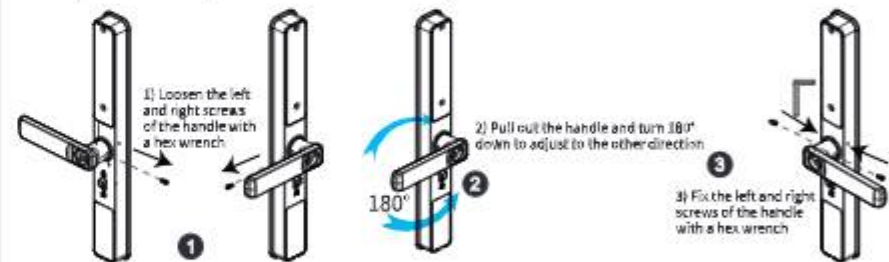


Adjust Right Handle and Left Handle

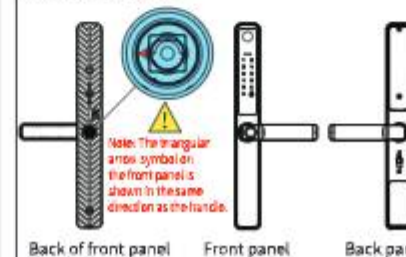
1. Adjust the front panel handles left or right



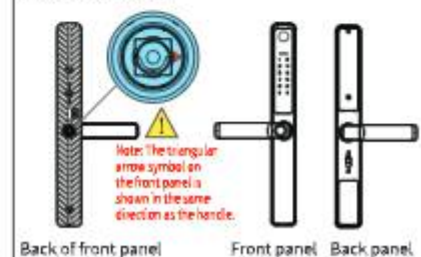
2. Adjust the back panel handles left or right



Open to the right:



Open to the left:

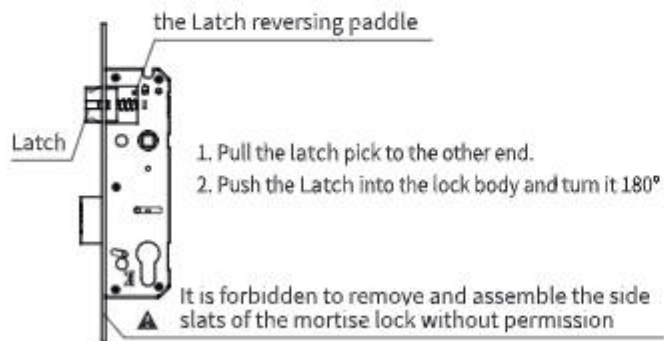


Door thick accessories selection

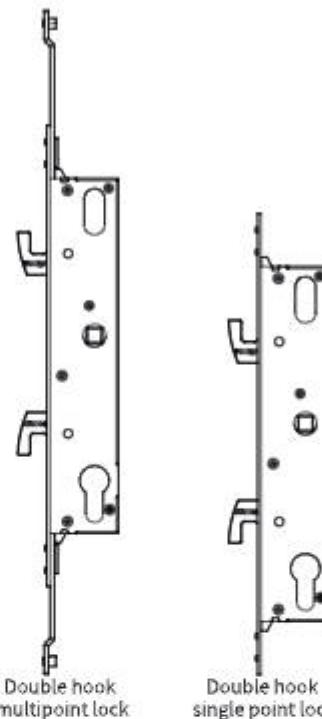
Applicable door thickness 35-70mm, beyond the range of doors require special customization. After determining the thickness of your door, select the appropriate accessories in the corresponding door thickness section

Accessories	Specification(mm)	Door thickness section detail and quantity	
		35-50(mm)	50-70(mm)
Square axis 70/90(mm)	50	1	
	70	1	
	90		1
Connecting stud 35/45(mm)	35	2	
	45	2	2
Screw MSX25(mm)	25 M5	1	
Screw MSX30(mm)	30 M5	1	
Screw MSX45(mm)	45 M5	2	1
Screw MSX50(mm)	50 M5		1
Screw 4.XX25(mm) (For wooden doors)	25 4.2	5	5
Screw MSX12(mm) (for iron doors)	12 M5	5	5

Double deadbolt mortise lock internal and external conversion

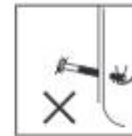


The sliding door can be equipped with double hook mortise lock



Precautions before installation

1) Do not use too much force during installation to avoid damaging the door lock.



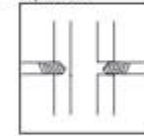
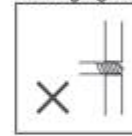
2) Wear glasses when drilling to protect your eyes.



3) Use the correct installation tools.



4) Drill holes on both sides of the door to avoid damaging the door panel.



Information and Safety Warnings:

1. introduce

This user manual will introduce the functions and usage of this smart lock. It is important that you follow the instructions and note all comments that appear in this manual.

Please refer to this manual before attempting to use this lock. If you have any questions not answered in this manual or require unconventional service, please call our customer service line or send us a FAQ.

2. Safety warning:

⚠ When reading this manual, pay attention to the following notes. Notes must be read and followed to prevent injury or damage to the lock.

⚠ Common usage:

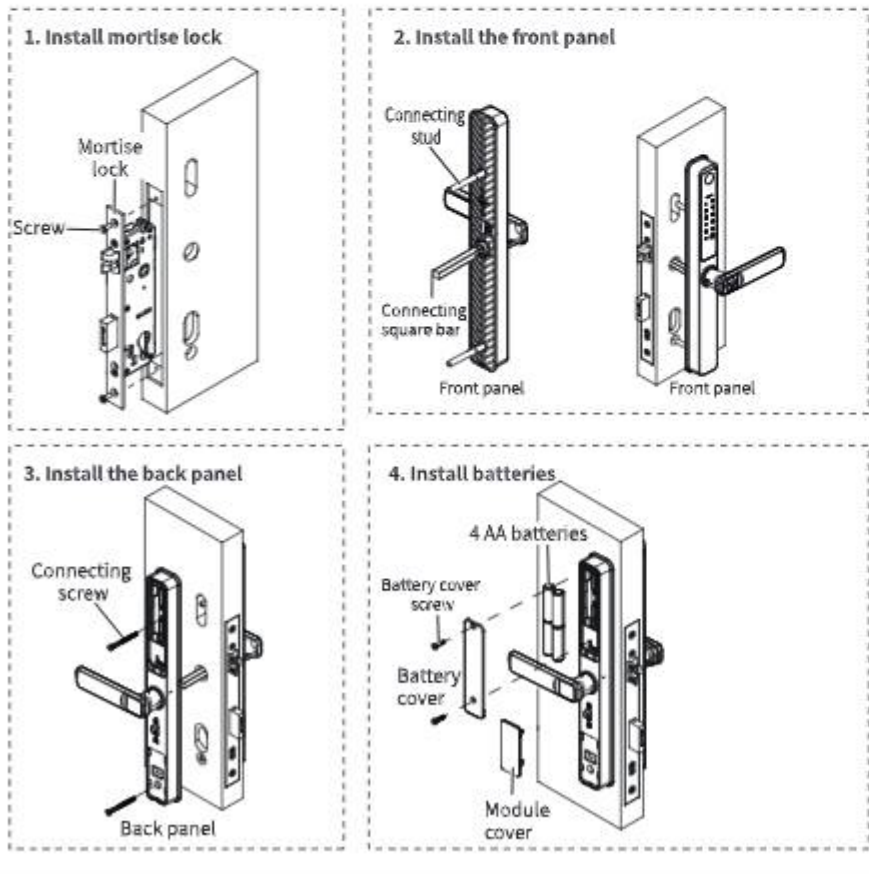
- * This lock can only be used in the manner described in this manual.
- * All parts of the inspection lock are included. If any parts are missing, please contact our service staff.
- * There is a protective film on the front touch screen. If there is a scratch on the protective film, please remove the protective film when necessary.
- * Please use 4 AA batteries. Do not mix old and new batteries or other zinc-manganese batteries. As described in this manual, do not leave batteries outside items are inserted into the lock.
- * Before starting installation, please ensure that all surfaces are flat, mounted on the door or have any type of defects such as gaps or warping. The lock may fail or become completely inoperable.
- * Do not apply any detergent directly to any part of the lock. When cleaning, only use clean water or mild cleaner in soft non-grind clean on the cloth.
- * Locks must be used with the Tuya APP. The lock works without an APP, but only when using an app can realize the complete function.

Information and Safety Warnings:

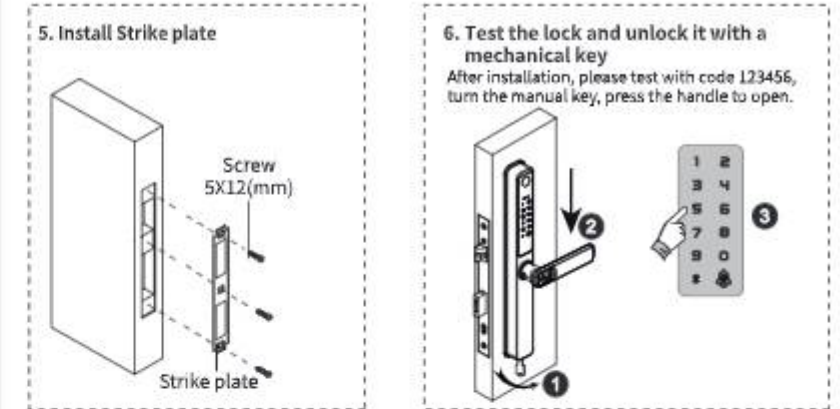
3. Terms of Sale and Service

- * Please read the instructions carefully before use!
- * 1 year electronic warranty.
- * This product comes with a 1-year limited warranty on electronic parts. Limited warranty on mechanical and surface quality against defects in materials and workmanship under normal use. Proof of purchase and ownership is required for the warranty to take effect.
- * Please feel free to contact us for any errors or problems in our manual or after sale terms. ,
- * We are not responsible for compensation or free maintenance for damage caused by human factors or unavoidable causes. Please check our after-sales service terms.
- * Non-technical personnel do not remove the lock at will. If necessary, please operate under the guidance of technical personnel.
- * Note: The product picture may be slightly different from the actual product, please refer to the actual product.
- * After replacing the battery, please do not discard it at will. Please return the battery to the recycling station to avoid environmental pollution!

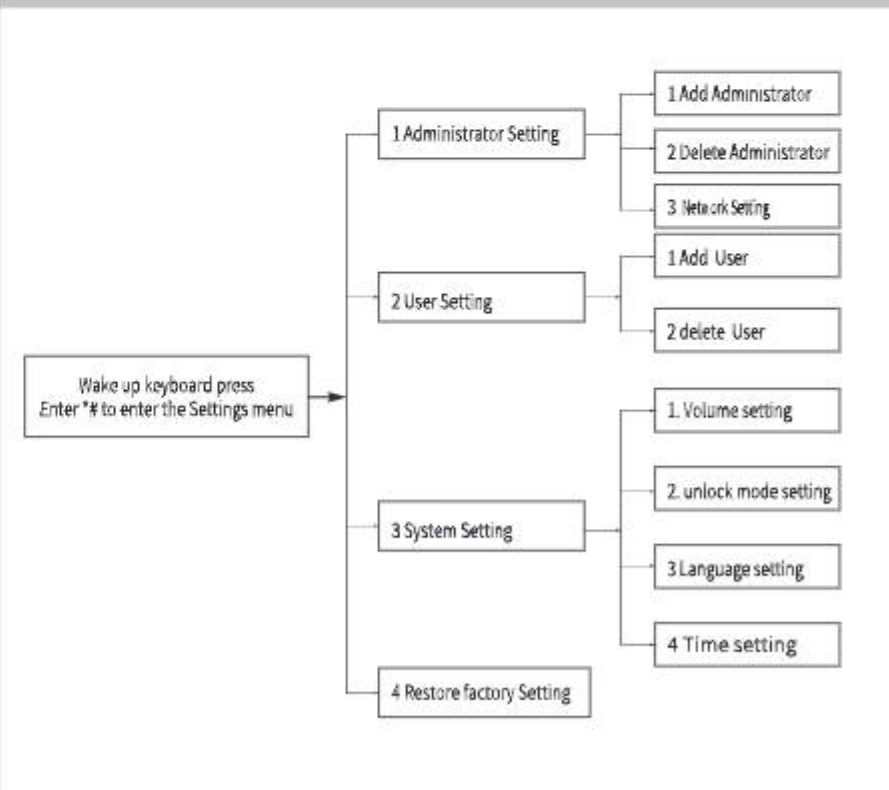
Installation steps



Installation steps



The menu structure is shown in the figure



Precautions before operating the smart lock

1. Unlock the privacy switch settings

By default, The default administrator password is 123456. You must change this password in order to set the network. You cannot set the smart lock through Tuya APP under the default password 123456 in the factory state, and the electronic lock button is also unlocked!

There is a privacy button on the back panel. You can pull up the button with the "lock" sound. Then locked inside, only the administrator can open the door other user password or IC card will be invalid. You can pull the button down again, accompanied by the sound "Unlock" to cancel this feature.



Push the button up to lock it



Push the button down to unlock it

Note: Push the button up to lock the state, push the button down to unlock the state.

2. Other precautions

- 1) The administrator can be a password/fingerprint or IC card, which you can set according to your own requirements. There are 9 administrators in total.
- 2) Press the # key to confirm and press * to return to the previous step. If there is no operation within 10 seconds, the lock will exit the setting.
- 3) After 5 incorrect unlock, the keyboard will be locked for 30 seconds, during which time no operation will respond.
- 4) If you enter the wrong password for more than 5 consecutive times, the keyboard will be locked for 30 seconds. The system will not respond to any operation within 30 seconds.
- 5) Password anti-snooping function: enter the password as follows when opening the door: XXX password XXX; You can add some irrelevant codes before and after the password and press # to confirm. The password must be included in the input.
- 6) When the voltage is lower than 4.8V, it will automatically alarm every time you open the lock, and be sure to replace the new battery as soon as possible.
- 7) Hold down the "SET" key on the rear panel for 5 seconds (turn on the indicator 654321 at the same time) to restore the system to factory defaults. The initial management password is 123456.
- 8) After unlocking, enter "5" + # successively, and the lock will enter the normal opening mode (this setting is valid for this time. Enter the unlocking information again and then close the lock.
- 9) After unlocking, press "" to play the current unlocking information number.
- 10) After opening the electronic locking function, only the administrator can open the lock; Privacy features.

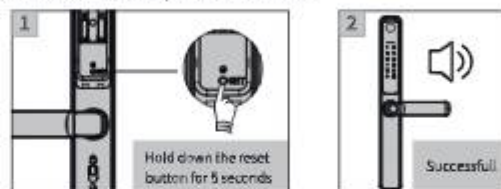
Smart lock operation

1. Function key Description

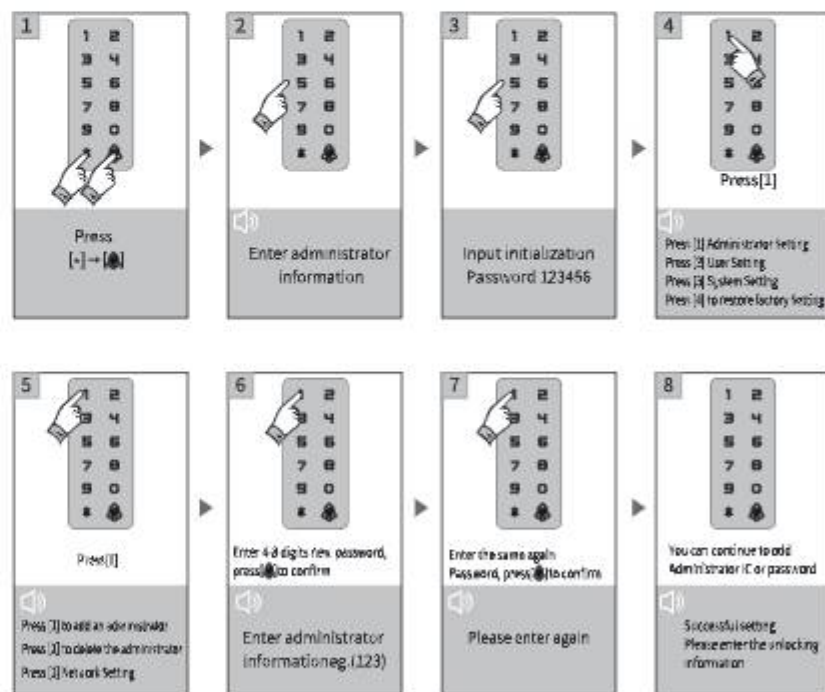
- 1) Administrator Information: refers to the fingerprint, password or IC card of the administrator.
- 2) Unlocking information: refers to the input fingerprint password or IC card information (including administrators and ordinary users).
- 3) * key: For Clear key or Back key, tap Clear the previous input when entering the password, and tap three times to clear the input.
- 4) # key: confirm key or menu function key.

2. Initialization Settings

Please note: Before you can start using this lock, you must register a new administrator. If not, you cannot configure a Wi-Fi-enabled lock. The procedure is as follows:



3. Add the administrator password



Smart lock operation

4. Delete the administrator password

1 Press **[*] → [OK]**

2 Enter administrator information

3 Enter the administrator password

4 Press **[1]**

Press **[1]** / Administrator Setting
Press **[2]** / User Setting
Press **[3]** / System Setting
Press **[4]** / restore factory setting

5 Press **[2]**

Press **[2]** to add an admin
Press **[2]** to delete the admin
Press **[3]** / Network Settings

6 Enter a sequence number, eg. 005, press **[OK]** to confirm

Enter the number, Press **[OK]** to confirm

7 You can continue to delete Administrator password

Successfully setting

5. Add user password

1 Press **[*] → [OK]**

2 Enter administrator information

3 Enter the administrator password

4 Press **[2]**

Press **[1]** / Administrator Setting
Press **[2]** / User Setting
Press **[3]** / System Setting
Press **[4]** / restore factory Setting

5 Press **[1]**

Press **[1]** to add a user
Press **[2]** to delete the user

6 Enter 4-8 digits password, press **[OK]** to confirm

Enter user information

7 Enter 4-8 digits password, press **[OK]** to confirm

Enter the same password again

8 Continue to add user passwords

Successful setting

Smart lock operation

6. Delete the user password

1 Press **[*] → [OK]**

2 Enter administrator information

3 Enter the administrator password

4 Press **[2]**

Press **[1]** / Administrator Setting
Press **[2]** / User Setting
Press **[3]** / System Setting
Press **[4]** / restore factory Setting

5 Press **[2]**

Press **[1]** to add a user
Press **[2]** to delete the user

6 Select **[1]** to delete a user
Select **[2]** to delete all users

Select **[1]** to delete a user
Select **[2]** to delete all users

7 Continue deleting user passwords

The user number is successful, delete press **[OK]** to confirm

7. Add user IC card

1 Press **[*] → [OK]**

2 Enter administrator information

3 Enter the administrator password

4 Press **[2]**

Press **[1]** / Administrator Setting
Press **[2]** / User Setting
Press **[3]** / System Setting
Press **[4]** / restore factory Setting

5 Press **[1]**

Press **[1]** to add a user
Press **[2]** to delete user

6 Touch the IC card to the sensing area

7 Continue to add other user IC cards

Successful setting

Smart lock operation

8. Delete the IC card information

1 Press [+][*]

2 Enter administrator information

3 Enter the administrator password

4 Press [2]

Press [1] Administrator Setting
Press [2] User Setting
Press [3] System Setting
Press [4] to restore factory Setting

5 Press [2]

Press [1] to add a user
Press [2] to delete user

6 Press [1] to delete a user
Press [2] to delete all users

7 Continue to delete the user IC card

The user number is successfully deleted press [4] to confirm

9. Add user fingerprint information

1 Press [+][*]

2 Enter administrator information

3 Enter the administrator password

4 Press [2]

Press [1] Administrator Setting
Press [2] User Setting
Press [3] System Setting
Press [4] to restore factory Setting

5 Press [1]

Press [1] to add a user
Press [2] to delete user

6 Enter the fingerprint in the sensor fingerprint area 4 times

Enter the unlocking information

7 Continue to add other user fingerprints

Successful setting

Smart lock operation

10. Delete the user fingerprint

1 Press [+][*]

2 Enter administrator information

3 Enter the administrator password

4 Press [2]

Press [1] Administrator Setting
Press [2] User Setting
Press [3] System Setting
Press [4] to restore factory Setting

5 Press [2]

Press [1] to add a user
Press [2] to delete user

6 Press [1] to delete a user
Press [2] to delete all users

7 Enter the user number and press [4] to confirm

Enter a user number, eg. 010

11. System setting

1 Press [+][*]

2 Enter administrator information

3 Enter the administrator password

4 Press [3]

Press [1] Administrator Setting
Press [2] User Setting
Press [3] System Setting
Press [4] to restore factory Setting

Smart lock operation



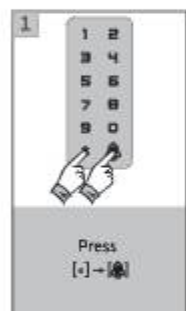
- Press [1] Volume setting
- Press [2] unlock mode setting
- Press [3] Language setting
- Press [4] time setting.



- Press [1] to turn on/off the prompt tone.
- Press [2] to unlock a single key or a combination key
- Press [3] to select English or Chinese
- Press [4] to change the lock time

Note: You can follow the sound prompt to unlock type/language/lock time and other Settings, these features are designed for some special cases

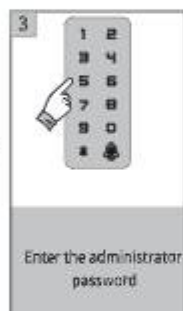
12. Restore factory Settings



Press
[*] -> [0]



Enter administrator
information



Enter the administrator
password



Press[4]
Press [1] Administrator Setting
Press [2] User Setting
Press [3] System Setting
Press [4] to restore factory Setting



Enter administrator
Information



Successful
Initialization

Network operation

1. APP configuration (optional Tuya Smart WIFI, currently only 2.4G WIFI band is supported)

- 1) Add an administrator (if added, skip it);
- 2) Search "Tuya Smart" in the App store or APP store to download the app and install it.
- 3) Register and log in with your mobile number.
- 4) Press the "TUYA Smart" interface to find the security sensor, record "Door lock Wi-Fi", and click to complete the device addition and use as prompted.



- 5) Add a network:
 - a) Press * + [0] to verify the administrator, press 1 to enter the administrator settings, and press 3 to configure the network for voice broadcast networking settings
 - b. Voice announcement: Press "1" for WiFiconnection (indicator at the top of the screen is slow) Press "2" for Intelligent connection (indicator at the top of the screen is fast blinking)
 - c. When the addition is successful, the 1234 keyboard light on the keyboard will be turned on successively and the voice will announce: "Operation succeeded"; Voice broadcast "Add failed" after timeout;
- 6) Remote unlocking: wake up the screen and press * + [0] after the voice prompt: remote unlocking request;
- 7) The lock time will be corrected when unlocking remotely.

Tuya APP operation

1. Download Tuya APP

The IOS version can be downloaded from app store, and the Android version can be downloaded from google play, App Store, Baidu AI, 360, Huawei, Xiaomi and other app markets.



2 Open the Tuya APP in the mobile phone



Smart life

3 Registering an account

Enter the Tuya APP and click "Register" in the upper right corner to enter the interface of account and registration. You can register an account by mobile phone or email. You can choose either way.



4 Login account

After login->enter the account->Enter the login password of the account.



5 Adding devices

Step 1: Wake up operation smart lock, press "1" 4"
>> Start Network >> Network Configuration (LAN Hong);
Step 2: Add device — security monitoring — "Door lock Wi-Fi"



6 Connect WIFI

Enter the password of connected WIFI and click next.



Tuya APP operation

7 Perform the following steps: Go to the next step



8 Select Wi-Fi Fast connection Wait for the connection



9 The distribution network is successful, enter the home door lock PRO



10 Press the doorbell to unlock remotely

Remote-unlocking is triggered by locking the doorbell, the guest requests the owner unlocks, as shown below: smart door lock—remote request—unlock



11 User list

Click the door opening record to view the remote information, the alarm message interface displays the image of the customer who pressed the doorbell remotely, and the operation log interface displays the unlocking information, as shown below:

