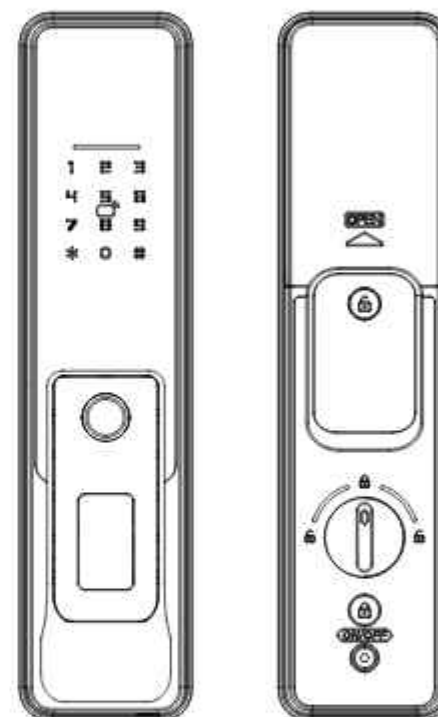




Smart Lock

User manual



* To connect to the Internet, must purchase the version with Tuya WiFi function

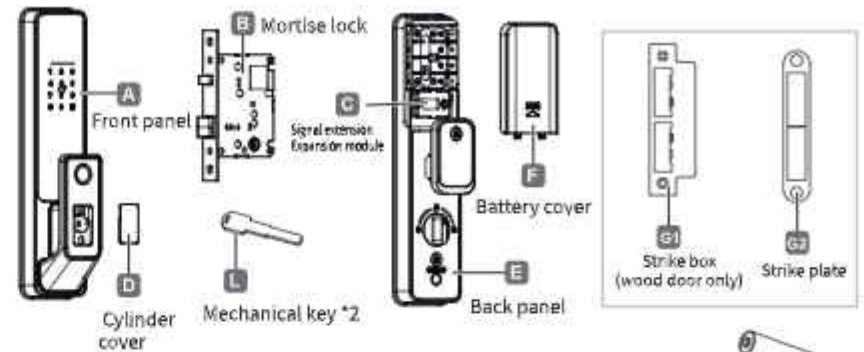


Scan the QR code below to download the APP



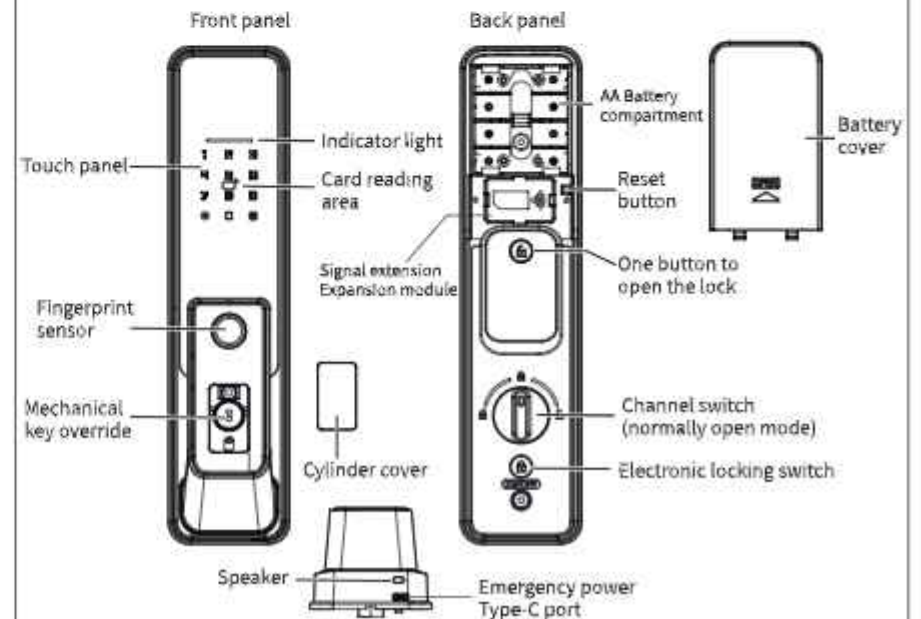
Search on the mobile app market or the Apple Store "Tuya Smart" or "Smart Life"

Accessories



Door thickness Quantity	H	I	J	K	M AA battery*4 N IC card
	Connecting pillar	Connecting stud	Connecting screw	Screw	
35-40mm	4*5*35mm x 2	5*50mm x 2	M4*30mm x 1 M4*35mm x 1	4.2*25mm X 6	
41-50mm	4*5*35mm x 2	5*50mm x 2	M4*35mm x 1 M4*45mm x 1	4.2*25mm X 6	
51-60mm	4*5*45mm x 2	5*50mm x 2	M4*35mm x 1 M4*45mm x 1	4.2*25mm X 6	

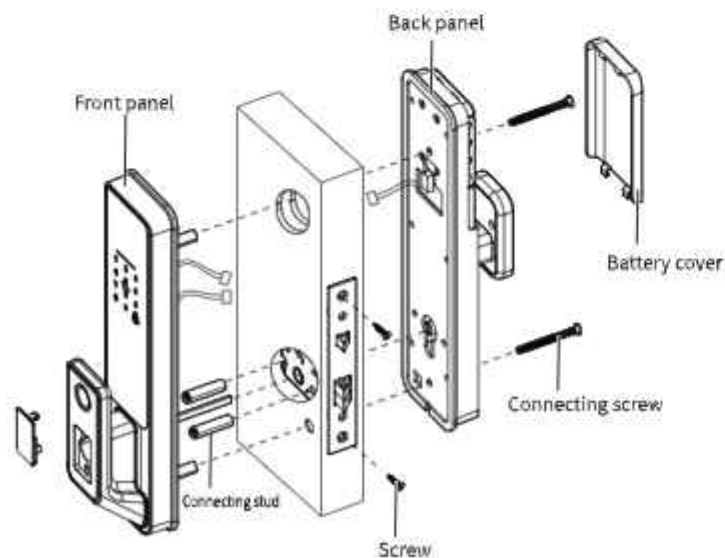
Product overview



Specification

Material	Aluminum alloy, ABS, acrylic, tempered glass
Surface treatment	Black/Nickel plated
Door thickness	35-60mm
Communication	WIFI
Support system	iOS 7.0 or above, Android 4.4 or above
Battery life	(10-12 months) Press 10 times/day to unlock normally
Power support	DC6V:4 AA alkaline batteries
Static current	≤50 uA
Dynamic current	<200mA
Unlocking mode	Fingerprint, IC card, password, APP, mechanical key
Unlocking time	1-1.5 S
Working temperature	-20-50°C
Working humidity	10%-95%
Default password	The default password is 123456, which becomes invalid after the administrator is reset.
Mortise lock type	Support 5050 electronic mortise lock
Virtual password	Available
Number of users	IC card + Password + fingerprint :300 groups, 9 groups of administrators
Width of door seam	Suitable for less than 6mm

Installation guide



Information and Safety Warnings:

1. Introduce

This user manual will introduce the functions and usage of this smart lock. It is important that you follow the instructions and note all comments that appear in this manual.

Please refer to this manual before attempting to use this lock. If you have any questions not answered in this manual or require unconventional service, please call our customer service line or send us a FAQ.

2. Safety warning:

⚠ When reading this manual, pay attention to the following notes. Notes must be read and followed to prevent injury or damage to the lock.

⚠ Common usage:

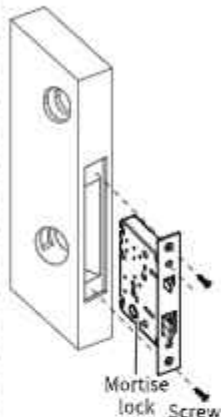
- * This lock can only be used in the manner described in this manual.
- * All parts of the inspection lock are included. If any parts are missing, please contact our service staff.
- * There is a protective film on the front touch screen. If there is a scratch on the protective film, please remove the protective film when necessary.
- * Please use 4 AA batteries. Do not mix old and new batteries or other zinc-manganese batteries. As described in this manual, do not leave batteries outside items are inserted into the lock.
- * Before starting installation, please ensure that all surfaces are flat, mounted on the door or have any type of defects such as gaps or warping. The lock may fail or become completely inoperable.
- * Do not apply any detergent directly to any part of the lock. When cleaning, only use clean water or mild cleaner in soft non-grind clean on the cloth.
- * Locks must be used with the Tuya APP. The lock works without an APP, but only when using an app can realize the complete function.

3. Terms of Sale and Service

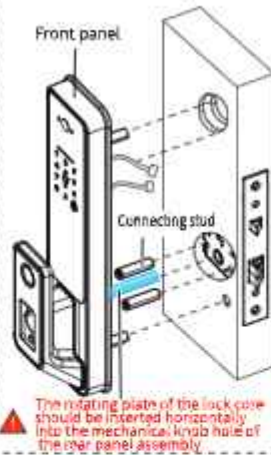
- * Please read the instructions carefully before use!
- * 1 year electronic warranty.
- * This product comes with a 1-year limited warranty on electronic parts. Limited warranty on mechanical and surface quality against defects in materials and workmanship under normal use. Proof of purchase and ownership is required for the warranty to take effect.
- * Please feel free to contact us for any errors or problems in our manual or after sale terms.
- * We are not responsible for compensation or free maintenance for damage caused by human factors or unavoidable causes. Please check our after-sales service terms.
- * Non-technical personnel do not remove the lock at will. If necessary, please operate under the guidance of technical personnel.
- * Note: The product picture may be slightly different from the actual product, please refer to the actual product.
- * After replacing the battery, please do not discard it at will. Please return the battery to the recycling station to avoid environmental pollution!

Installation steps

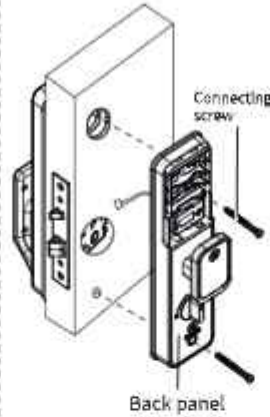
1. Install mortise lock



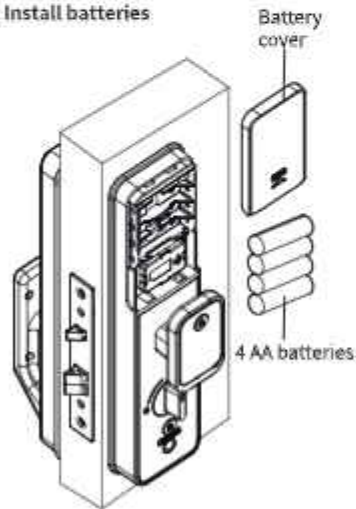
2. Install the front panel



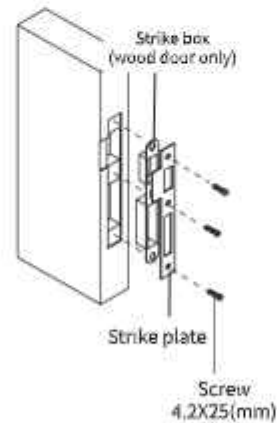
3. Install the back panel



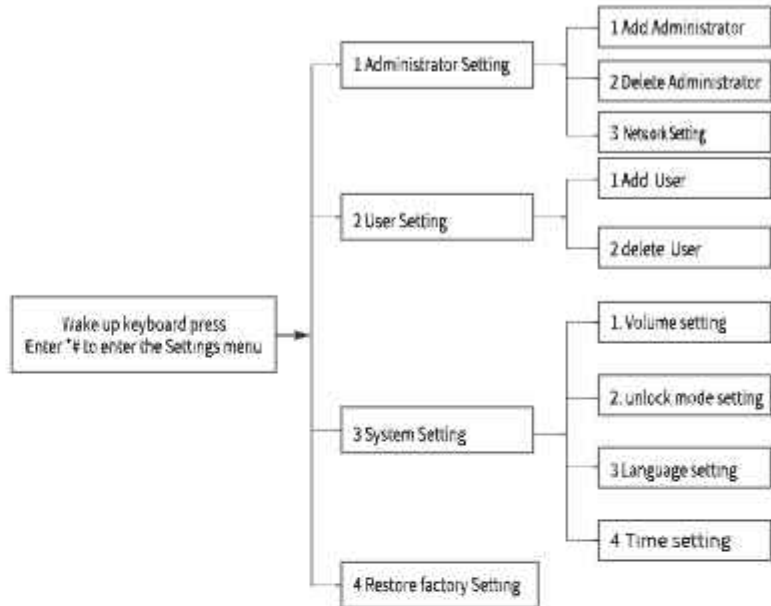
4. Install batteries



5. Install Strike plate & Strike box



Menu structure



Precautions before operating the smart lock

1. Electronic switch button setting

By default, The default administrator password is 123456. You must change this password in order to set the network. You cannot set the smart lock through Tuya APP under the default password 123456 in the factory state, and the electronic lock button is also unlocked!



Only the administrator has permission to open the lock:
Press once, VOICE broadcast:
The door was locked



Both administrators and common users can open the lock:
Press it again to hear the voice broadcast:
The lock is off

Note: Press the electronic lock switch once to unlock, and press the lock again to close.

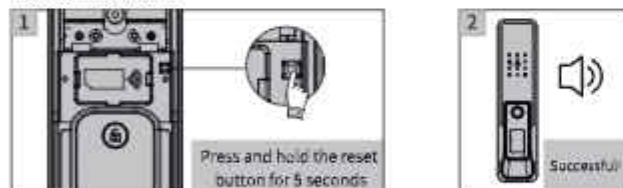
2. Other precautions

- The administrator can be a password/fingerprint or IC card, which you can set according to your own requirements. There are 9 administrators in total.
- Press the # key to confirm and press * to return to the previous step. If there is no operation within 10 seconds, the lock will exit the setting.
- After 5 incorrect unlock, the keyboard will be locked for 30 seconds, during which time no operation will respond.
- If you enter the wrong password for more than 5 consecutive times, the keyboard will be locked for 30 seconds. The system will not respond to any operation within 30 seconds.
- Password anti-snooping function: enter the password as follows when opening the door: XXX password XXX; you can add some irrelevant codes before and after the password and press # to confirm. The password must be included in the input.
- When the voltage is lower than 4.8V, it will automatically alarm every time you open the lock, and be sure to replace the new battery as soon as possible.
- Hold down the "SET" key on the rear panel for 6 seconds (turn on the Indicator B34921 at the same time) to restore the system to factory defaults. The initial management password is 123456.
- In the factory state, input 3336669999 can quickly switch between Chinese and English.
- After unlocking, enter "5" + "#" successively, and the lock will enter the normal opening mode. This setting is valid for this time. Enter the unlocking information again and then close the lock.
- After unlocking, press "*" to play the current unlocking information number.
- After opening the electronic locking function, only the administrator can open the lock; Privacy features.

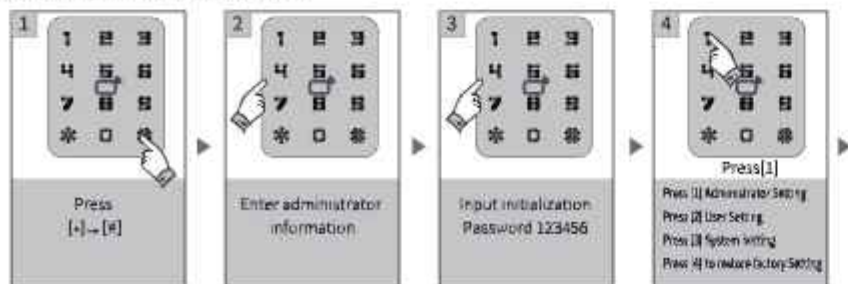
Smart lock operation

1. Initialization Settings

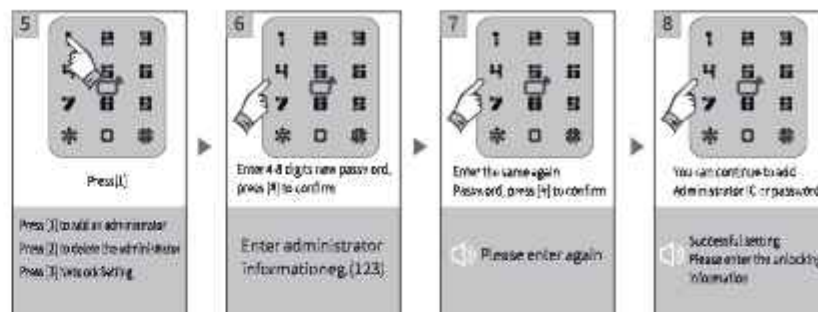
Please note: Before you can start using this lock, you must register a new administrator. If not, you cannot configure a Wi-Fi-enabled lock. The procedure is as follows:



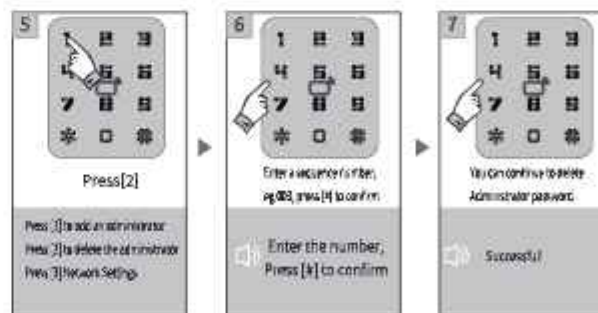
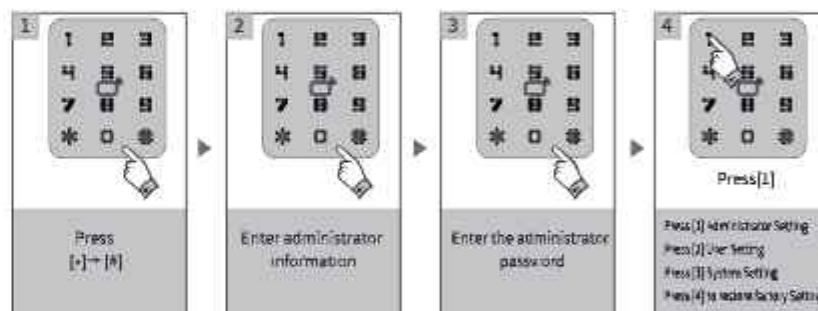
2. Add the administrator password



Smart lock operation



3. Delete the administrator password



Smart lock operation

4. Add user password

1 Press **[*]→[#]**

2 Enter administrator information

3 Enter the administrator password

4 Press **[2]**
Press **[1]** Administrator Setting
Press **[2]** User Setting
Press **[#]** System Setting
Press **[#]** to restore factory setting

5 Press **[1]**
Press **[1]** to add a user
Press **[2]** to delete the user

6 Enter 4-8 digits password, press **[#]** to confirm
Enter user information

7 Enter 4-8 digits password, press **[#]** to confirm
Enter the same password again

8 Continue to add user passwords
Successful!

5. Delete the user password

1 Press **[*]→[#]**

2 Enter administrator information

3 Enter the administrator password

4 Press **[2]**
Press **[1]** Administrator Setting
Press **[2]** User Setting
Press **[#]** System Setting
Press **[#]** to restore factory setting

Smart lock operation

5 Press **[2]**
Press **[1]** to add a user
Press **[2]** to delete the user

6 Select **[1]** to delete a user
Select **[2]** to delete all users
Select **[1]** to delete a user
Select **[2]** to delete all users

7 Continue deleting user passwords
Use user numbers successfully
Enter press **[#]** to confirm

6. Add user IC card

1 Press **[*]→[#]**

2 Enter administrator information

3 Enter the administrator password

4 Press **[2]**
Press **[1]** Administrator Setting
Press **[2]** User Setting
Press **[#]** System Setting
Press **[#]** to restore factory setting

5 Press **[1]**
Press **[1]** to add a user
Press **[2]** to delete user

6 Touch the IC card to the sensing area

7 Continue to add other user IC cards
Successful!

Smart lock operation

7. Delete the IC card information

1 Press [*]→[#]

2 Enter administrator information

3 Enter the administrator password

4 Press[2]
Press [1] Administrator Setting
Press [2] User Setting
Press [3] System Setting
Press [4] to restore factory Setting

5 Press[2]
Press [1] to add a user
Press [2] to delete user

6 Press [1] to delete a user
Press [2] to delete all users

7 Continue to delete the user IC card.
The user number is successfully delete press [#] to confirm

8. Add user fingerprint information

1 Press [*]→[#]

2 Enter administrator information

3 Enter the administrator password

4 Press[2]
Press [1] Administrator Setting
Press [2] User Setting
Press [3] System Setting
Press [4] to restore factory Setting

Smart lock operation

9. Delete the user fingerprint

5 Press[1]
Press [1] to add a user
Press [2] to delete user

6 Enter the fingerprint in the sensor. Fingerprint area 4 times
Enter the unlocking information

7 Continue to add other user fingerprints.
Successful

1 Press [*]→[#]

2 Enter administrator information

3 Enter the administrator password

4 Press[2]
Press [1] Administrator Setting
Press [2] User Setting
Press [3] System Setting
Press [4] to restore factory Setting

5 Press[2]
Press [1] to add a user
Press [2] to delete user

6 Press [1] to delete a user
Press [2] to delete all users

7 Enter the user number and press [#] to confirm
or
Enter a user number, eg. 010

8 Press[2]
Press [2] to delete all users

Smart lock operation

10. System setting

1 Press [*] → [#]

2 Enter administrator information

3 Enter the administrator password

4 Press [3]

Press [1] Administrator Setting
Press [2] User Setting
Press [3] System Setting
Press [4] to restore factory Setting

5 Press [1] volume setting
Press [2] unlock mode setting
Press [3] language setting
Press [4] time setting

6 Press [C] to turn on or off the prompt tone.
Press [2] to unlock a single key or a combination key
Press [3] to select English or Chinese
Press [C] to change the lock time

Note: You can follow the sound prompt to unlock type/language/lock time and other Settings, these features are designed for some special cases

11. Restore factory Settings

1 Press [*] → [#]

2 Enter administrator information

3 Enter the administrator password

4 Press [4]

Press [1] Administrator setting
Press [2] User Setting
Press [3] System Setting
Press [4] to restore factory Setting

5 Enter administrator information

6 Successful Initialization

Zigbee Configuration (Optional Tuya Zigbee)

- 1) Add an administrator (if added, skip it);
- 2) Search "Smart Life" in the App store or APP store to download the app and install it;
- 3) Register and log in with your mobile number;
- 4) Add a Gateway according to the gateway operation instructions;
- 5) Press the "Smart Life" interface to find the security sensor, record the "Door lock Zigbee", click and complete the device addition and use as prompted; (You can also add a door lock by adding a child device under the gateway interface)
- 6) Add a network:
 - a. Press [*] + # to verify the administrator, press 3 to enter the administrator Settings, and press 3 to configure the network for voice broadcasting
 - b. Voice announcement: "Operation succeeded" when the addition is successful; voice broadcast "Add failed" after timeout;
- 7) Remote unlocking: Enter the correct password on the door lock Interface to confirm;

Add remote control (optional)

- 1) Add an administrator (if added, please skip it);
- 2) Add remote press, please refer to add common users;
- 3) Press any button on the remote control to indicate successful operation

Tuya APP operation (optional function)

1. Download the Tuya APP

Please download Tuya Smart or Smart Life from the Apple Store or App Market,
You can also scan the QR code on the right to download the APP directly.



2. Register an account.

Please use your email or mobile phone number to register an account.



1) Sign up



2) Register with email or mobile phone number to get verification code



3) Fill in the verification code



4) Set the password to complete the registration

Tuya APP operation (optional function)

3. Network Settings

1 Press (+) → [8]

2 Enter administrator information

3 Enter the administrator password

4 Press [1] Admin Status Setting
Press [7] User Setting
Press [3] System Setting
Press [4] to restore factory Setting

5 Press [1] to add administrator
Press [2] to enable the administrator
Press [3] Network Setting

6 Press [1] to connect to the router
Press [2] Start Connect

Note: There are two connection modes under this manual: hotspot connection, Smart connection, and Bluetooth connection (dual module).

4. Intelligent Connection (EZ mode)

Please open the Tuya Smart APP and select WiFi lock under "Security and Sensors". Please ensure that the privacy button is unlocked. If it is locked, WiFi connection cannot be configured.

Step 1 Select Lock (WiFi) under the "Security & Sensors" category

Step 2 Enter the WiFi password and click Next

Step 3 Confirm the rapidly blinking number 5 and click Next

Tuya APP operation (optional function)

Step 4 Scanning equipment

Step 5 Adding a device succeeds

Step 6 Interface to edit the name of the lock

5. Hotspot Connection (AP mode)

Please open the Tuya Smart APP and select wifi lock under "Security and Sensor". Please ensure that the privacy button is unlocked. If it is locked, wifi connection cannot be configured.

Step 1 Select Lock (WiFi) under the "Security and Sensors" category

Step 2 Enter wifi password and click Next

Step 3 In the upper right corner, select AP Mode

Step 4 Confirm the rapidly blinking number 5 and click Next

Step 5 Connect to mobile hotspot, click "Go to Connection"

Step 6 Find SmartLife-xxx and connect

Tuya APP operation (optional function)



Step 1
Scanning equipment



Step 8
Adding a device succeeds



Step 9
You can edit the lock name

6. BLE Quick connection

This is an additional form of BLE connection. This operation should be performed in AP or EZ mode state (5 blinking). A window pops up as follows:



Step 1
The window for adding a device is displayed



Step 2
Enter the WiFi password and click Next.



Step 3
Place your phone near your router and lock it to the cloud.



Step 4
connection

7. Remote unlock function

When visitors press the numbers 9 and # in sequence, there is a remote unlock request in the App sent to the administrator as a photo, you can cancel the operation by pressing "agree to unlock" or "refuse to unlock".

