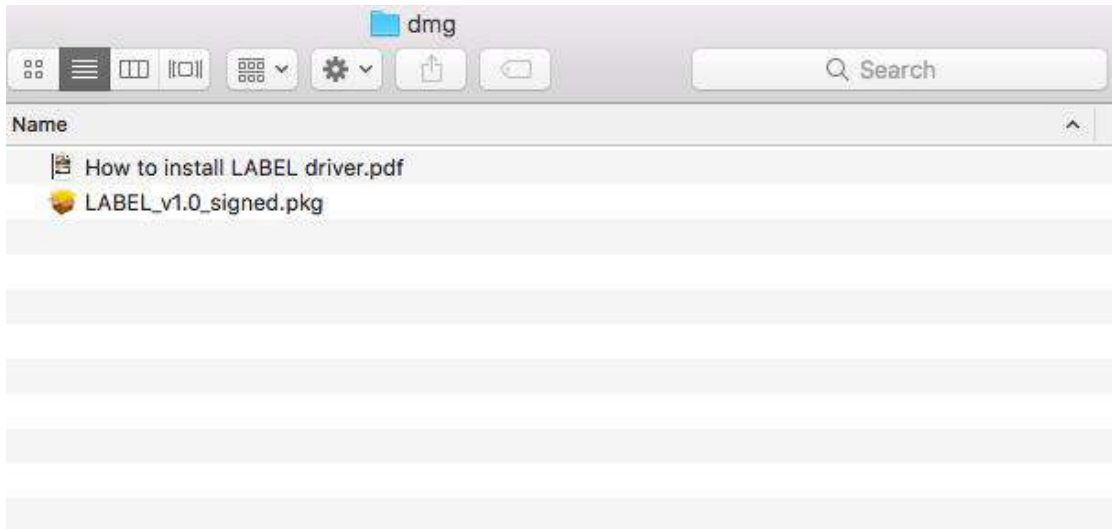


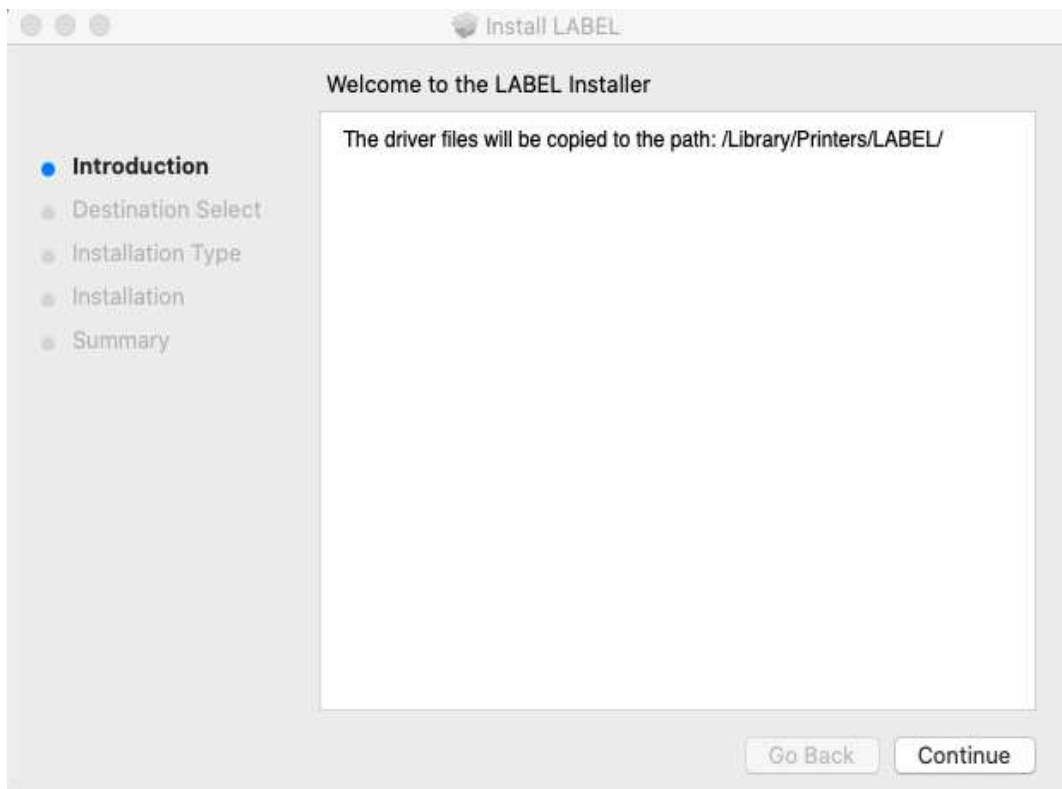
How to install LABEL driver

1. Double click the LABEL .dmg

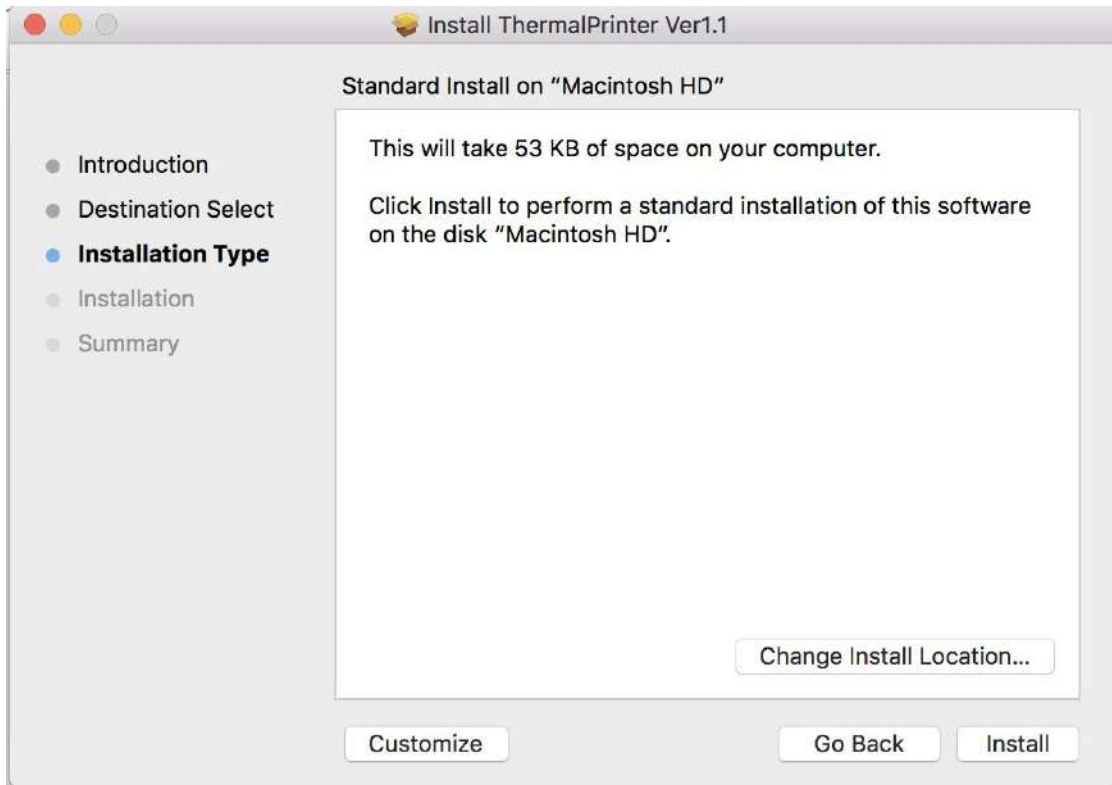
2. Double click LABEL_V1.0_signed .pkg to install the driver.



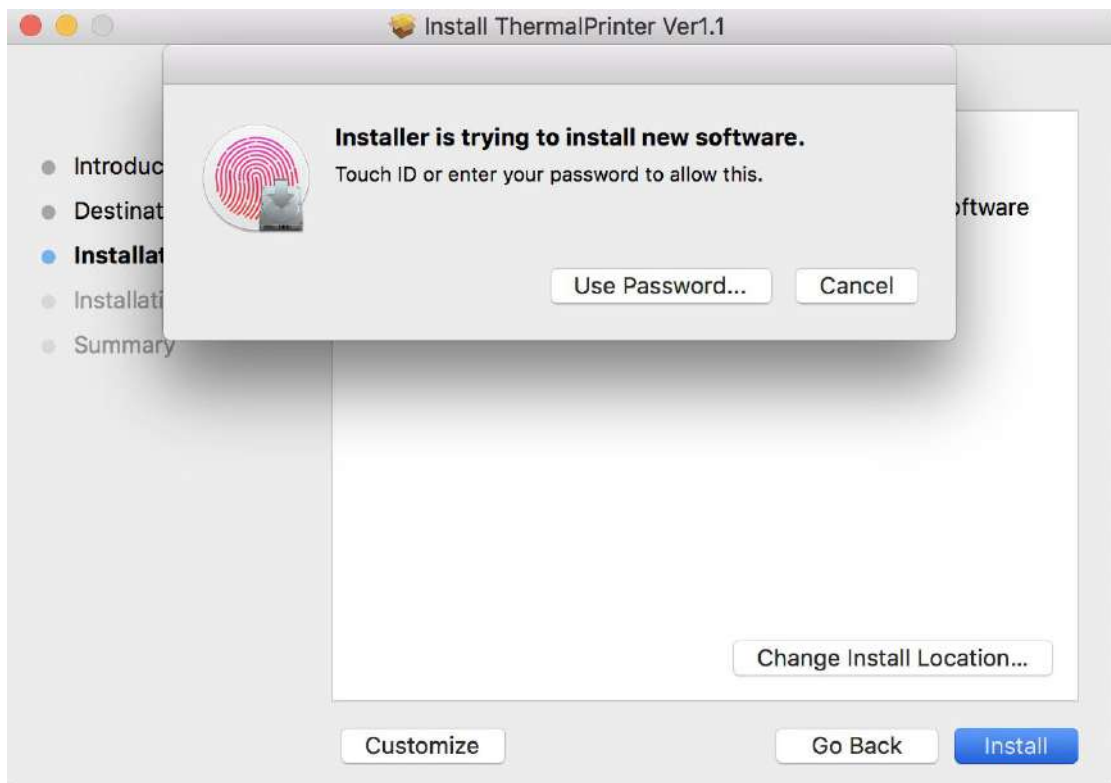
3. Click "continue" button.



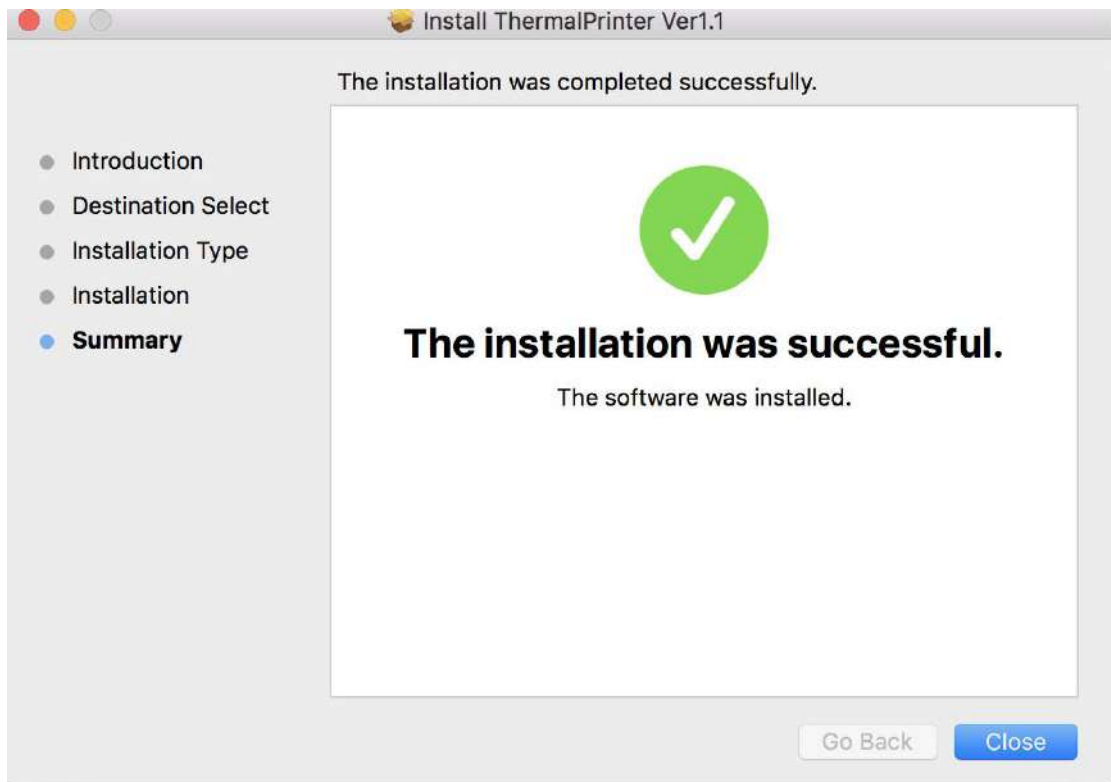
4. click "Install"



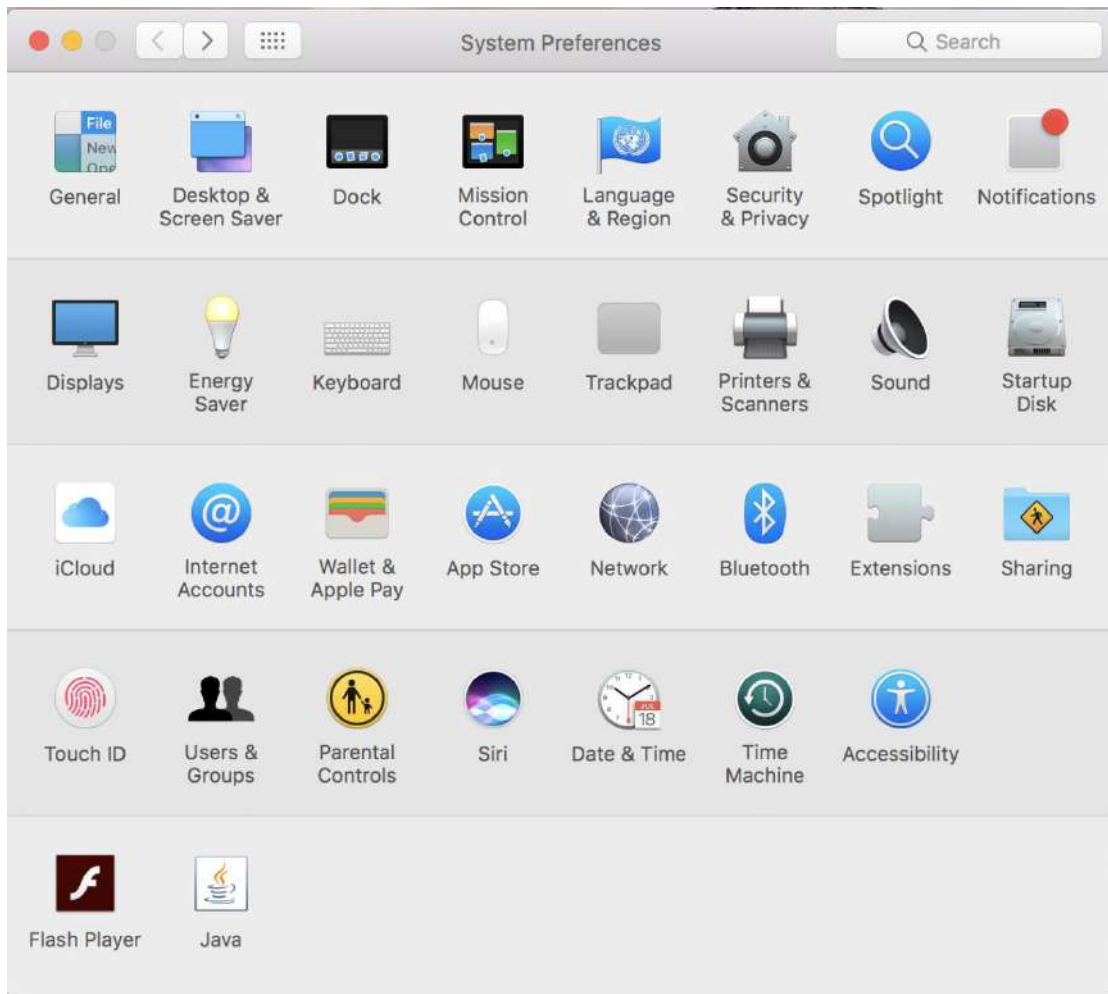
5. Use Touch ID or Enter your password.



6. Click "Close" to finish.



7. Open "System Preferences", and click "Printers and Scanners".

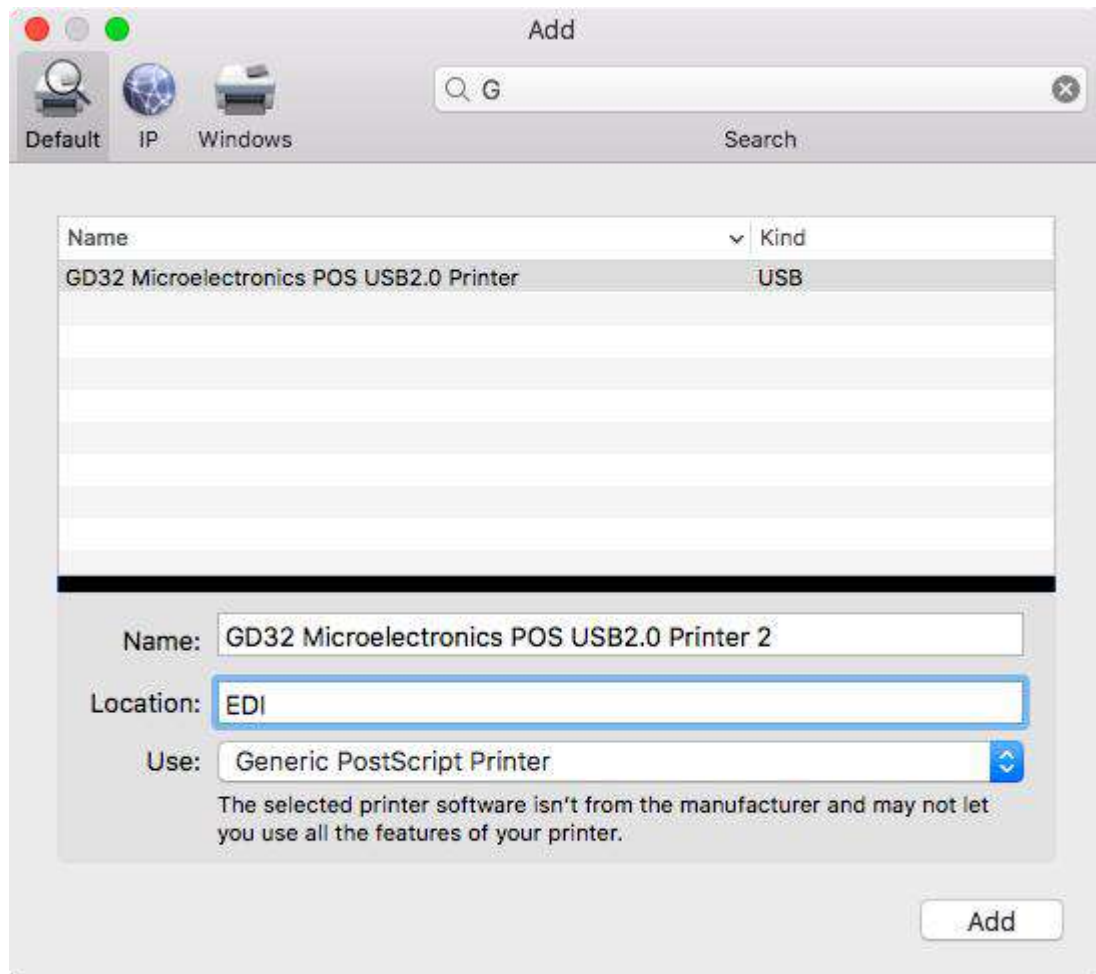


8.click "+" to add a new printer.

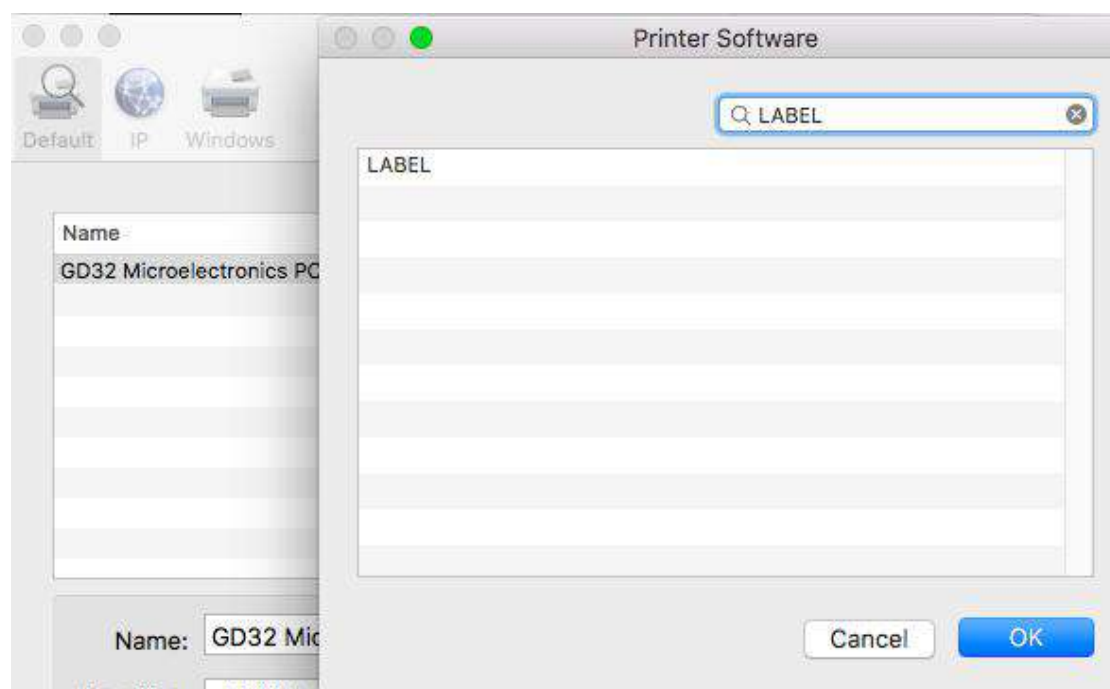


9.Turn on your printer, and choose "LABEL",select "Select Software" under "Use" drop down

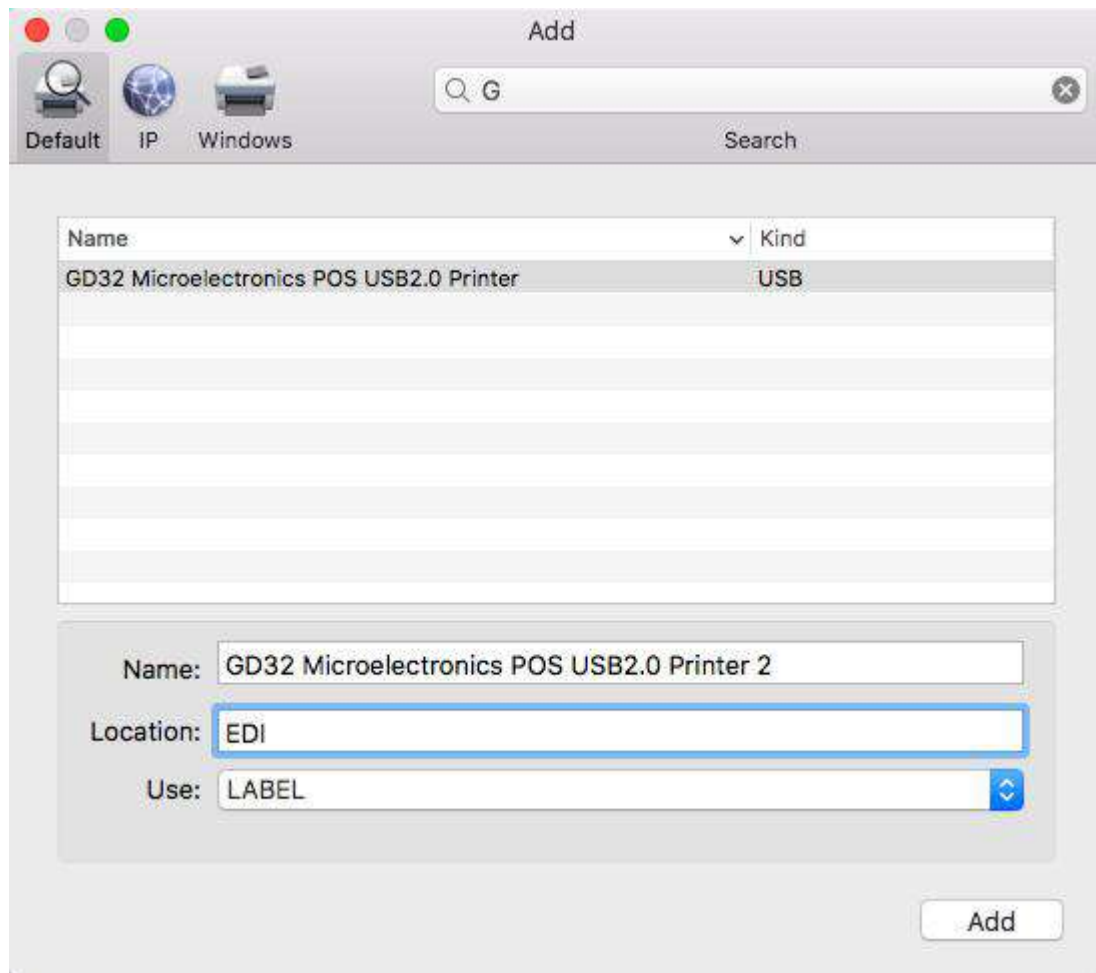
menu.



10. Input "LABEL", and choose "LABEL"

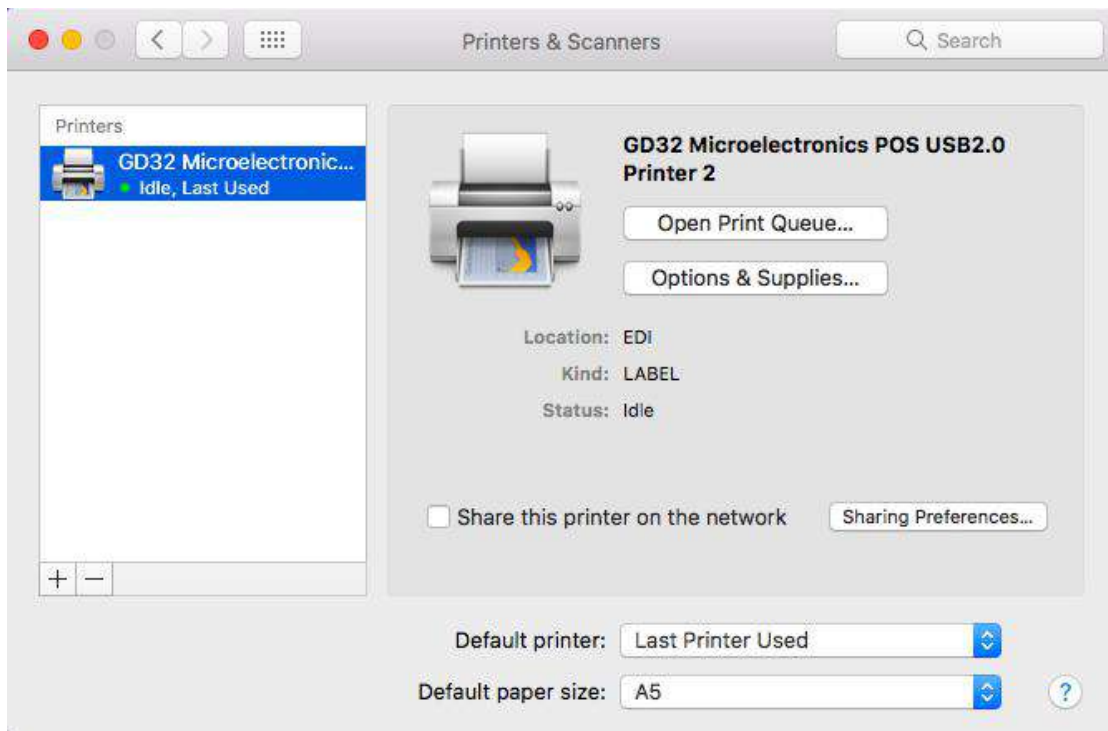


11. Click "Add"



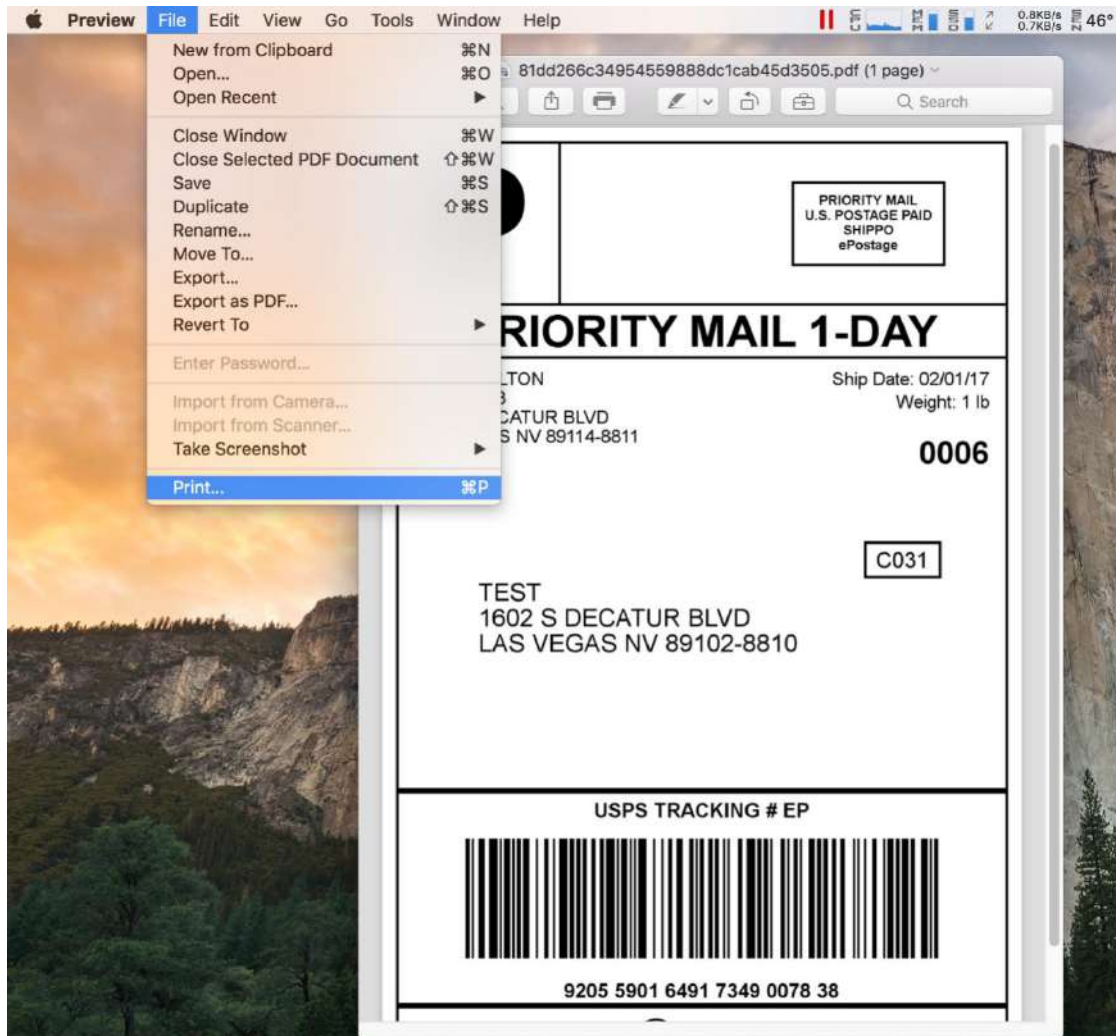
12. Use Touch ID or enter your password.

13. Finish.

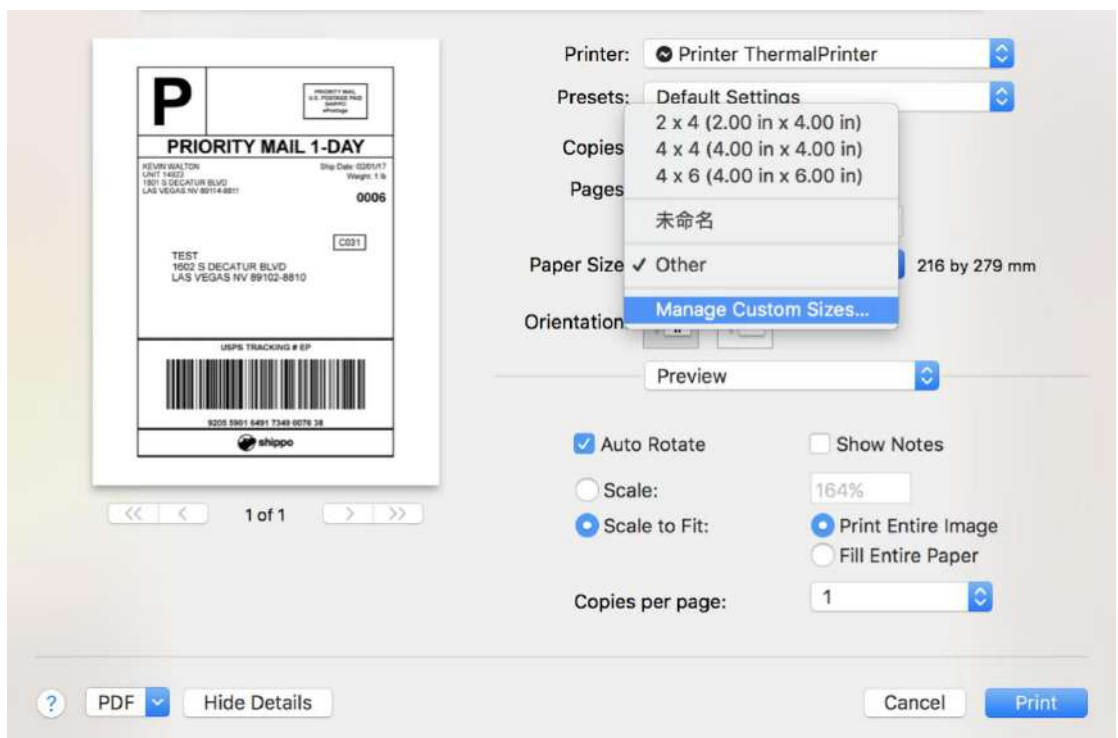


How to change the setting of the printer, and how to define label size(Preview)

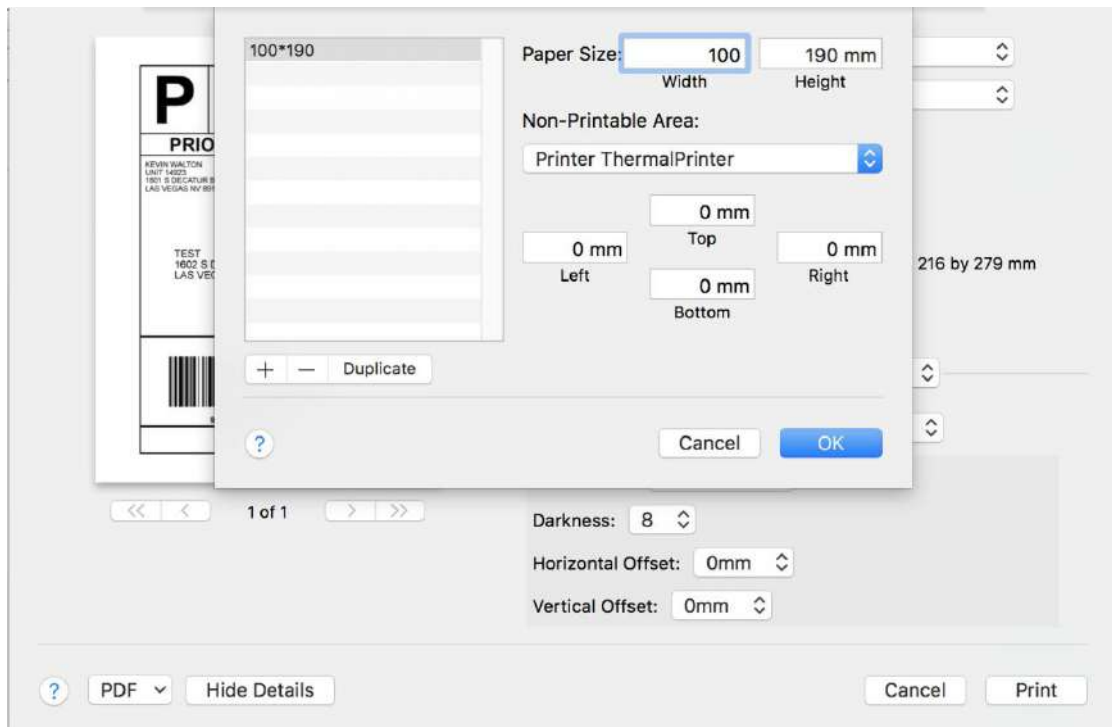
1. Open a PDF file(any document file is ok), Select "File"-->"Print".



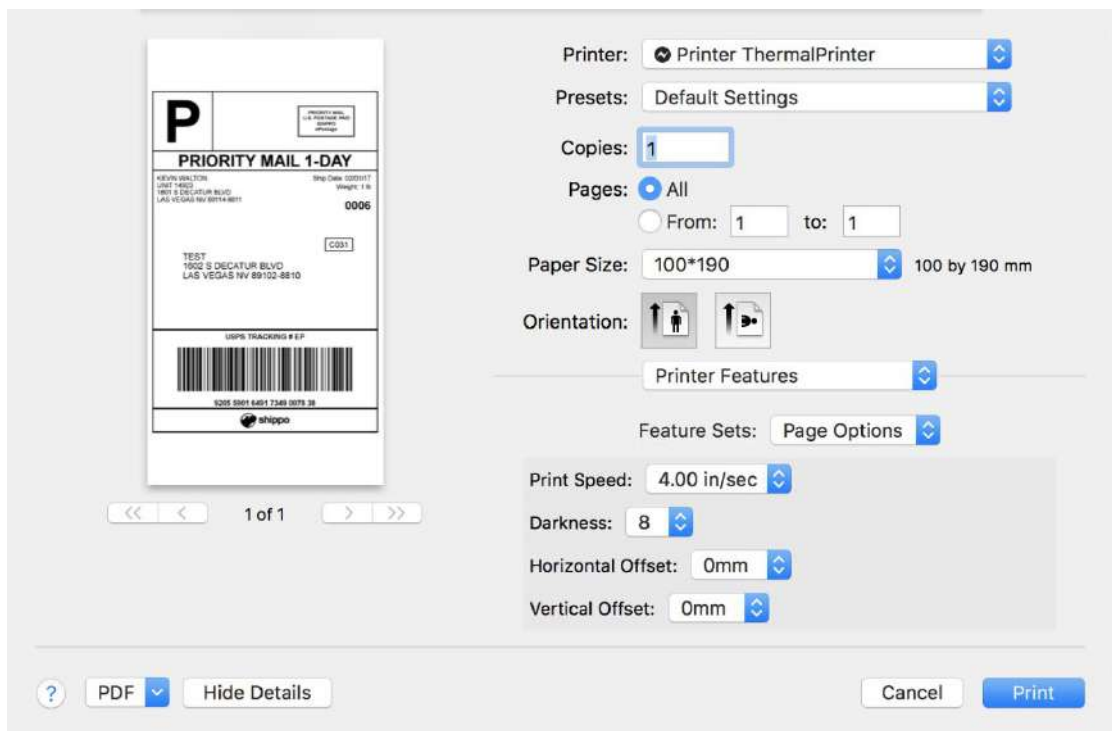
2. Choose "Manage Custom Sizes" under "Paper Size" drop down menu.



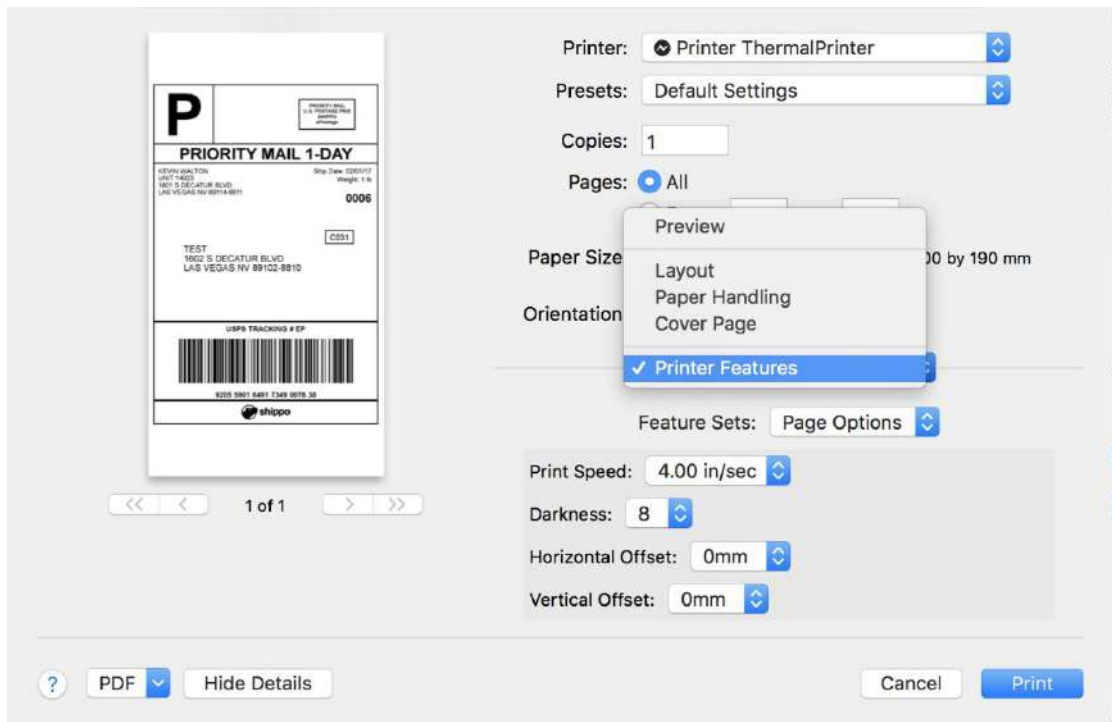
2. Click “+” to define a new label size, click “OK” to save.



3. You can select the new Label “100*190” now.



4. Select “Printer Features”, then you can change the setting of printer, for example: Speed, Darkness..



5. Click "Print".