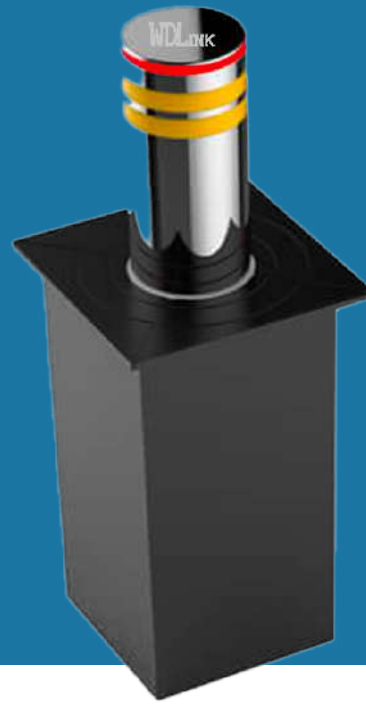


WD219B

Automatic Bollard



WD219B is a high-quality automatic bollard which is used widely to protect security areas from vehicle intrusion. It is an ideal solution for entrance with high security requirements. Raising time of WD219B is 3 seconds. Even if the intrusion is from high tonnage vehicle in high speed, the bollard will stop the vehicle easily because it is so solid that the vehicle will break after impact instead. There are also some extra safety precautions in the design of WD219B.

The LED bar on the bollard can effectively avoid accidents caused by poor vision of drivers at night. In case of power failure, the bollard can be lowered manually. Equipped with PLC (Programmable Logic Controller), various control methods can be achieved easily, such as biometric readers, remote control and push button station. The bollard is commonly found in customs, ports, prisons and military bases where traffic guidance is needed to protect people and property. This product provides ideal access control in areas mentioned above and raises the level of security.

Features

- Minimum passing pressure: It can pass container trucks of less than 120-80 tons.
- Linkage interface: Traffic light, infrared, ground sense, license plate recognition.
- In case of power failure: It can be lowered manually.
- Waterproof integrated movement: It can be soaked in water.
- Control system: PLC control programming command.
- Integrated motor core: The stroke is 1000mm, the overall outer diameter of the oil cylinder is 60mm, and the rod diameter is 16mm.



Specifications

System control:	PLC controller (200*400*500)
Rated voltage:	AC220V 50Hz
System power (W):	350W
Rise time:	6S for 1 meter
Descent time:	6S for 1 meter
Operating temperature:	(-40°C~75°C)
Storage environment:	(-40°C~75°C)
texture of material:	SUS 304/316
Height of lifting column:	≤600mm
Standard thickness:	6mm
Lifting column diameter:	219mm
Box size:	400*400*1100
Weight:	±150KG
Column:	Wire drawing / mirror
Led:	12V (acrylic lamp ring)
LED color:	12 convertible
Reflective film:	2 3M diamond grade
Protection grade of movement:	IP68
Rising and falling:	Reverse operation
Noise during plant operation:	≤60dB
power switch:	220V
Control solenoid valve:	24V
Static state:	No current / off state
Remote control range:	50M - 100M



WDLINK